

Pacific Lamprey Conservation Initiative

2022 Conservation Agreement Update - Frequently Asked Questions

Q: What is the Pacific Lamprey Conservation Initiative?

The Pacific Lamprey Conservation Initiative (PLCI) is a collaboration of Native American tribes, federal, state, municipal and local agencies, and non-governmental organizations working to achieve long-term persistence of Pacific Lamprey and their habitats and support traditional tribal use of Pacific Lamprey throughout its historical range throughout the West Coast of North America. The intent of the partnership is to achieve this goal, where ecologically and economically feasible, by maintaining viable populations and their habitats in areas where Pacific Lamprey exist currently, restoring where they are at risk of extirpation or are extirpated, and doing so in a manner that addresses the importance of lamprey to tribal peoples. PLCI envisions a future where threats to Pacific Lamprey and their habitats are reduced, and the historic geographic range and ecological role of Pacific Lamprey are restored to the greatest extent possible.

Q: What is the Pacific Lamprey Conservation Agreement?

The Pacific Lamprey Conservation Agreement represents a cooperative commitment by natural resource agencies and tribes to leverage available resources (human and capital) to reduce threats to Pacific Lamprey in the face of climate change, and to improve their habitats and population status, and support traditional tribal use of lamprey.

Q: How often is the Conservation Agreement updated?

First signed in 2012, the Conservation Agreement is revisited every five years for recommitment and revision if necessary. The Conservation Agreement was not revised in 2017. It was revised by the PLCI Conservation Team in 2022 to reflect structural and operational changes and progress within PLCI. If changes are made to the document, all signatories will need to resign the Conservation Agreement to maintain their commitment.

Q: If my organization previously signed the Conservation Agreement in 2012 or 2017, do we need to sign on again?

Yes! The 2022 Conservation Agreement reflects a comprehensive review and discussion by the Conservation Team to reflect the current status and progress made by PLCI and our partners in support of lamprey conservation over the last decade. Because changes were made to the Conservation Agreement, all supporting parties will need to sign the 2022 Conservation Agreement again to become or maintain status as a signatory.

Q: If my organization didn't sign a previous version of the Conservation Agreement, can we still sign in 2022?

Yes! This is a great time for supporting partners to elevate their commitment to Pacific Lamprey by signing the Agreement.

Q: If my organization chooses not to sign the 2022 Conservation Agreement, how can we show our support?

An organization can be an official supporter of the Conservation Agreement or send a letter of support. Supporters of the Conservation Agreement sign a supporter signature page, which will be included in the Conservation Agreement. If your organization chooses to send a letter of support, the letter will also be included in the Conservation Agreement.

Q: If my organization chooses not to sign the 2022 Conservation Agreement, can we still engage in PLCI?

Yes! While signing the Conservation Agreement is the strongest way to demonstrate an organization's commitment to PLCI's mission, we recognize that may not be appropriate for all organizations. Those that do not sign the Agreement can participate and engage in PLCI activities and initiatives and develop additional cooperative actions in support of PLCI. These organizations are also encouraged to participate in regional implementation planning, the Pacific Lamprey Assessment, and other PLCI committees and workgroups.

Q: Does PLCI fund lamprey research and on-the-ground conservation projects?

Yes! PLCI has two sources of funds (Bonneville Power Administration and National Fish Habitat Partnership) that PLCI partners can apply for annually. Proposals for projects directly benefiting Pacific Lamprey are informed by the Regional Management Units and Regional Implementation Planning process.

Q: Does an organization have to be a signatory to the Conservation Agreement to be eligible for funding via PLCI?

No. Project proponents do not need to be from signatories of the Conservation Agreement, and funding may be awarded to organizations that are not signatories.

Q: What are the benefits of joining PLCI?

- Actively demonstrating your organization's commitment to conserving and restoring Pacific Lamprey
- Being the first to know about potential funding for lamprey work
- Networking with other lamprey researchers, managers and practitioners
- Partnership opportunities for lamprey work
- Staying up to date on emerging lamprey science and management

Q: What should we do if our organization has comments and/or suggested language changes to the Conservation Agreement?

The current version of the Conservation Agreement has gone through a comprehensive review by PLCI's Conservation Team, Steering Committee, Conservation Team Co-Chairs and Coordinator. A summary of the changes made can be found in an accompanying document entitled *'Summary of Revisions to 2022 PLCI Conservation Agreement'*, and no changes were made to sections VII. Authority or X. Federal Agency Compliance of the Agreement.

Beginning in February 2022, members of PLCI's Conservation Team are being given 90 days to route the updated Agreement through their internal review channels (including legal and general councils) to vet, with a particular focus on any potential legal issues that may have arisen and/or changed since the last iteration of the Agreement in 2012. If any issues are identified that require changes to the Agreement, organizations are asked to contact the PLCI Coordinator (Alicia Marrs, alicia@pacificlamprey.org) as soon as possible, but by **May 20, 2022** at the very latest. Any requested changes should specify whether or not they are desired or required by the suggesting organization, and whether the organization would still be willing to sign the Agreement if the suggested changes were not able to be incorporated.

Q: When should we collect the appropriate signature from our organization's designee?

Any updates/changes requested to the 2022 Conservation Agreement will be reviewed during the May 2022 Policy Committee meeting and the final version of the Agreement will be distributed for final signatures in **June 2022**.

Potential signatories will be asked to return their signature page by **September 30, 2022**.

We will celebrate this new commitment to Pacific Lamprey conservation with a ceremonial "signing" of the 2022 Conservation Agreement at Lamprey Summit V in December 2022.

Q: What is the timeline for reviewing the 2022 Conservation Agreement?

The planned timeline for process of reviewing and signing the 2022 Conservation Agreement is as follows:

- **February 18, 2022:** Final Draft of 2022 Conservation Agreement is distributed to Conservation Team representatives to begin 90-day internal legal reviews within their respective organizations.
- **May 20, 2022:** Deadline to submit any comments and/or suggested changes to the PLCI Coordinator (Alicia Marrs, alicia@pacificlamprey.org)
- **June 2022:** Final version of 2022 Pacific Lamprey Conservation Agreement is distributed to Conservation Team representatives and other interested organizations to collect signatures from the appropriate individual within their organizations.
- **September 30, 2022:** Signatures due to the PLCI Coordinator.
- **December 2022:** Ceremonial signing of the 2022 Pacific Lamprey Conservation Agreement by signatories during Lamprey Summit V.

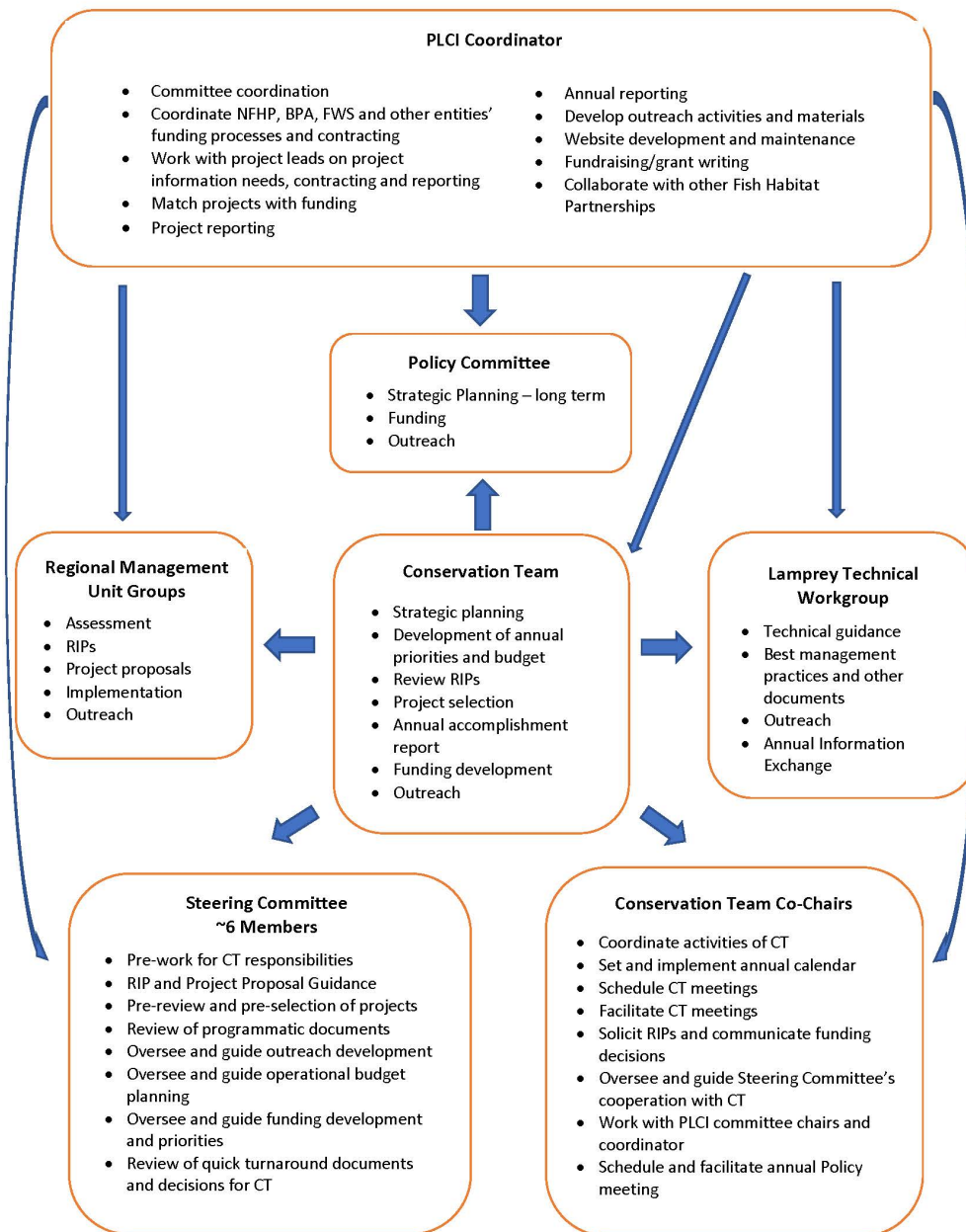
Q: What is Lamprey Summit V?

Beginning in 2004, every four to five years partners convene to revise the science and current status of Pacific Lamprey, and recommit to working collaboratively to conserve and restore this culturally and ecologically important species. In 2022, PLCI will convene Lamprey Summit V where key signatories and supporting parties will come together to present and learn about the latest five-year update to the

Pacific Lamprey Assessment, recommit to the Conservation Agreement for another five-year term, and discuss the many ongoing research and restoration actions implemented. Partners will also strategize and collaborate on a plan for the next five years that focuses on the science, conservation, and restoration of Pacific Lamprey.

Q: What is the organizational structure of PLCI?

PLCI consists of a variety of committees and workgroups, and the organizational chart can be found below.



ADDITIONAL QUESTIONS?

If you have any additional questions, or would like to discuss this further please do not hesitate to contact PLCI's Coordinator, Alicia Marrs (alicia@pacifclamprey.org; 360.319-7916) and/or either of the Conservation Team Co-Chairs: Kelly Coates (Tribal Co-Chair; kcoates@cowcreek-nsn.gov; 541-677-5585) and Benjamin Clemens (State/Federal Co-Chair; Ben.Clemens@oregonstate.edu; 541-757-5113).